



---

*Lefay Resort & Spa Dolomiti stands in the ski area of Madonna di Campiglio, in the splendid scenery of the Dolomites, declared by UNESCO a “World Heritage Site”. A contemporary luxury shelter that rises from the woods, perfectly in harmony with its surrounding landscape and offering the perfect location for exclusive meetings and events.*



# WORK & WELLNESS

---

*Thanks to the excellence of the Property and the top quality services,  
the second jewel of the Lefay Collection is the ideal setting for high level company  
conferences, team building events and business meetings in every season.  
Efficiency and luxury in a temple to wellness, where senses  
and soul are regenerated.*

## ACCOMMODATION

---

88 Suites of different types  
featuring a stunning view on  
the surrounding landscape of  
the Dolomites and a series of  
exclusive services:

- Terrace or balcony
- Bio-climatisation
- King or Twin Size bed
- Walk-in wardrobe
- Bathroom with double sink, bathtub,  
shower, separate WC and bidet
- Mini-bar and safe
- Electric fireplace
- Bluetooth sound speaker
- LED TV 4K with over 130  
international channels, Sky,  
Pay-TV and Google Chromecast
- Lefay SPA complimentary  
bathroom amenities
- Illy® Coffee Machine and  
selection of herbal infusions,  
tea and coffee
- SPA kit with bag, bathrobe  
and flip flops
- Fast, high quality bandwidth wireless
- Twice daily Housekeeping  
Service
- Complimentary mineral water

## RESTAURANT, BAR & LOUNGES

---

Dolomia Restaurant  
"Grual" Organic Restaurant  
Lounge Bar  
Sky Lounge  
Cigar Lounge

## LEFAY SPA

---

An exclusive temple of wellness  
of 5,000 sqm (53,820 sqft)  
featuring:

- Indoor and outdoor heated pools  
(3 swimming pools)
- Sauna area  
(9 different kinds of saunas)
- 24-hour Fitness Centre
- Fitness studios for breathing,  
meditation and physical-  
energetic rebalancing classes
- Treatment area with more than  
20 rooms and 2 Private SPAs





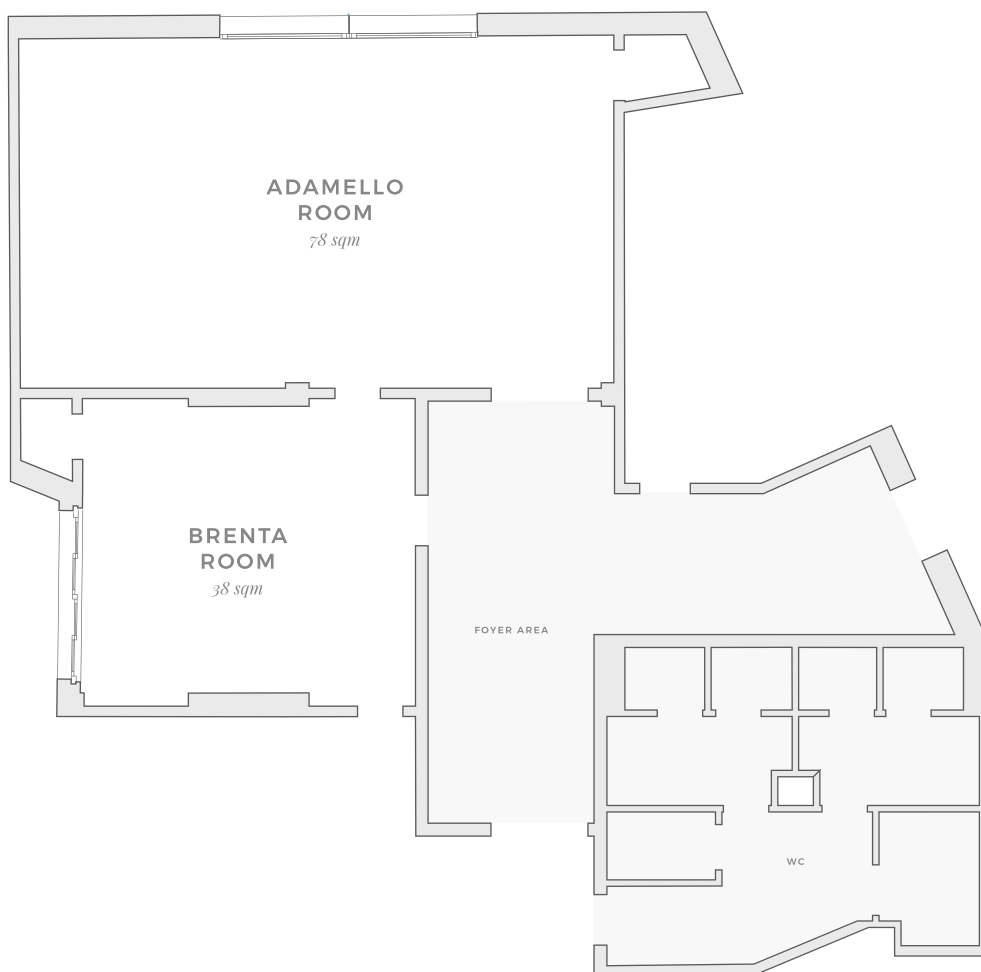


# MEETING ROOMS

---

*The Resort boasts a meeting centre featuring a large room for groups and a boardroom, both equipped with cutting-edge technology and natural light.*

*It is possible to enjoy a dedicated foyer for coffee breaks and a dedicated welcome reception area. Furthermore, the Dolomia Restaurant offers an area dedicated to events.*





## ADAMELLO MEETING ROOM

78 sqm (840 sq ft)

The Adamello Room, with a capacity of up to 64 people, theatre style, features a large and private working area. The space is enlightened by natural light thanks to a window from which is possible to glimpse the surrounding environment.

### SERVICES AND EQUIPMENT:

*PC with HDMI output for the management of multimedia content*

*Canon Wux 500 ST video projector*

*Ceiling lift for video projector*

*Motorized Inceeling screen with 3 m base*

*Satellite decoder with HDMI output*

*3 Headset microphones with shure handle*

*1 Headband radio microphone*

*Wi-Fi internet connection*

*Benq Content Sharing System*

*Audio system with 2 JBL CBT50 column speakers and 4 recessed false ceiling speakers*

*Telephone*

### ON REQUEST:

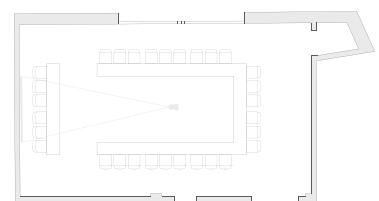
*Technical assistance*

*Flower decorations*

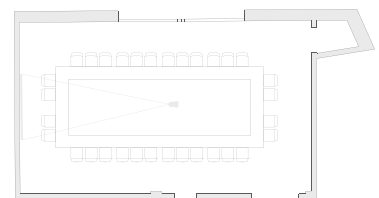
*Personalised equipment*

### LAYOUTS:

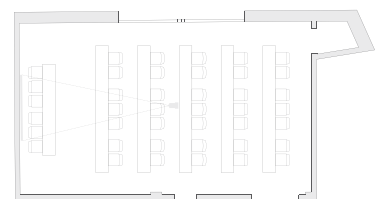
#### U-SHAPE: 30 SEATS



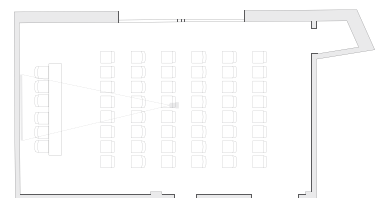
#### SINGLE TABLE: 32 SEATS



#### CLASSROOM: 41 SEATS



#### THEATRE: 54 SEATS



AREA: 7x11,2 m (22x37 ft)



## BRENTA MEETING ROOM

38 sqm (409 sq ft)

Blessed with natural light and a splendid view on the landscape thanks to a large window, the Brenta Room has a capacity of up to 28 people and is ideal for small to medium-sized meetings.

### SERVICES AND EQUIPMENT:

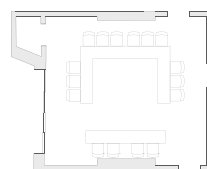
75 inch monitor  
HDMI connection  
Benq Content Sharing System  
Wi-Fi internet connection  
Audio system  
Telephone

### ON REQUEST:

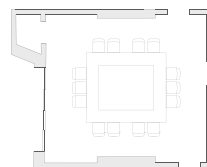
Technical assistance  
Flower decorations  
Personalised equipment

### LAYOUTS:

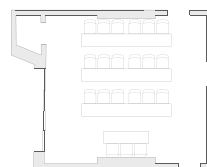
#### U-SHAPE: 16 SEATS



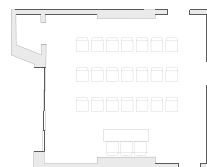
#### SINGLE TABLE: 14 SEATS



#### CLASSROOM: 21 SEATS



#### THEATRE: 24 SEATS



AREA: 6x6,4 m (20x20 ft)



# HOSPITALITY

---

*During the day, business meetings will be accompanied by the Lefay Vital Gourmet Menu, which focuses on typical Mediterranean cuisine, offering the taste of authentic Italian and local flavours.*

## WELCOME COCKTAIL

---

The Resort's meeting centre features a foyer area suitable for a welcome cocktail.

## COFFEE BREAK

---

The sweet creations of our pastry chefs along with freshly squeezed fruit juices, non-alcoholic drinks and other refreshments will delight your coffee breaks.

## BUSINESS LUNCH

---

Business lunches, buffet or sit down, and specially dedicated menus are served in the Resort's Dolomia Restaurant.

## DINNER

---

Our Chef will turn your business meeting into an exclusive gourmet experience, offering you dedicated menus or a gala dinner inside our Dolomia Restaurant with a dedicated dining area.

## OPEN BAR

---

The Lounge Bar and the Sky Lounge are the ideal venues for open bar events in front of a unique view over the Dolomites.







# WELLNESS & RELAXATION

---

*Lefay Resort & SPA Dolomiti, with its stunning views of the Dolomites and its magical atmosphere, offers you the unique and exclusive opportunity to combine your business meetings with fun, wellness and relaxation all year round.*

## RESORT FACILITIES

---

The 5,000 sqm (53,820 sqft) Lefay SPA features an indoor-outdoor swimming pool, a 20-metre (66 ft) training swimming pool and a whirlpool (all heated), 9 kinds of saunas as well as elegant relaxation areas

24-hour Fitness Centre with Technogym® equipment and fitness studios for muscular awakening activities

Wide outdoor areas for breathing, meditation and physical-energetic rebalancing activities

Treatment area featuring over 20 rooms and 2 Private SPAs for couple massages, face and body treatments and couple rituals

Beauty area with coiffeur service and cosmetic treatments

## LEISURE ACTIVITIES

---

Team building activities

Cooking classes with our Chef

Winter excursions (skiing, cross-country skiing, snowboard)

Summer excursions (golf, trekking, museums)

Guided mountain biking and walking riding around the beautiful local paths

Musical entertainment

## SERVICES

---

Covered garage with valet parking service

Bike rental

Free daily shuttle service to the ski gondolas and lifts of Pinzolo during winter

24 Hour Room Service

Baby Sitting service and Kids' Club

Laundry

Wi-Fi

Lefay Shop

Ski & Bike Room

Ski & Sports Shop

Multilingual Staff



## DIRECTIONS



FROM NORTH. Highway A22 Modena - Brennero: exit Trento Centro  
 FROM WEST. Highway A4 Milano - Venezia: exit Brescia Est  
 FROM SOUTH. Highway A22 Verona - Brennero: exit Rovereto  
 FROM EAST. Highway A4/E70: junction Verona  
 take the A22 Verona - Brennero exit Rovereto



(BZO) Bolzano 53 Km  
 (VRN) Verona 140 Km  
 (BGY) Milan Bergamo 162 Km  
 (LIN) Milan Linate 198 Km  
 (MXP) Milan Malpensa 247 Km  
 (TN) Trento - Private Line 63 Km  
 (VCE) Venice 261 Km



Trento Station (60 Km)  
 Brescia Station (106 Km)  
 Desenzano del Garda Station (105 Km)

Lefay Resort & SPA Dolomiti  
 Via Alpe di Gual, 16  
 38086 Pinzolo (TN) Italy  
 +39 0465 768800  
[mice.dolomiti@lefyresorts.com](mailto:mice.dolomiti@lefyresorts.com)  
[lefyresorts.com](http://lefyresorts.com)

HEALING HOTELS  
OF THE WORLD

VIRTUOSO.  
SPECIALISTS IN THE ART OF TRAVEL

SMALL  
LUXURY  
HOTELS  
OF THE WORLD

*Independently minded.*